

STEEL STRUCTURES & METAL BUILDINGS

THE STYLE THE CLASS THE DESIGN

in steel...



RE-WRITING RULES

ARCHITECT
Planet 3 Studios

DESIGN CONCEPT

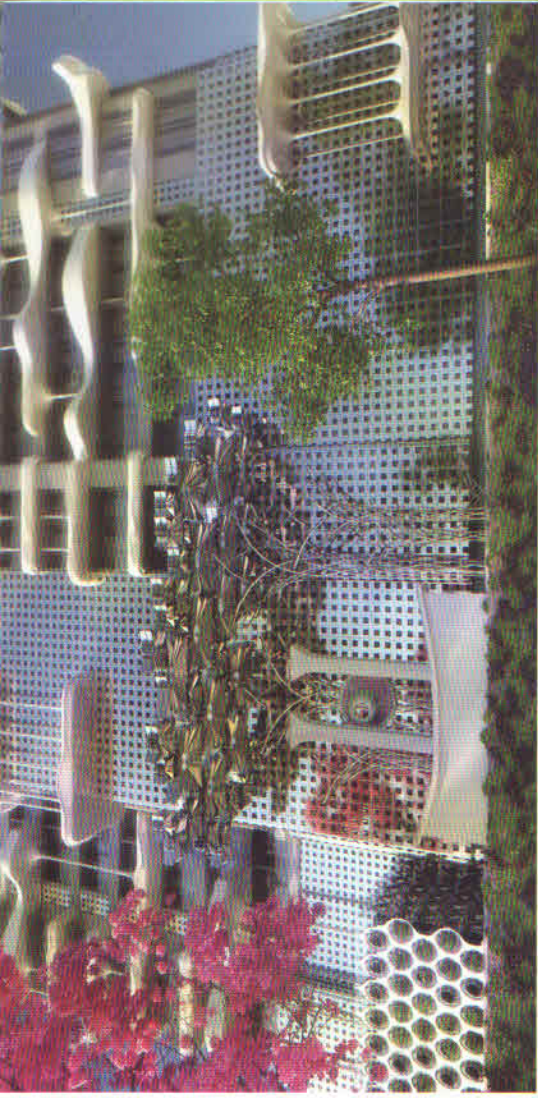
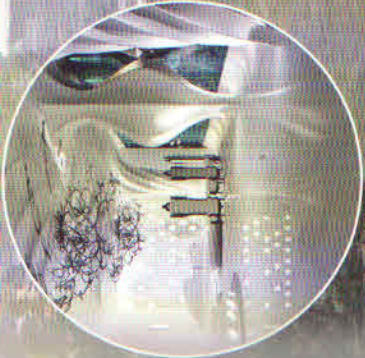
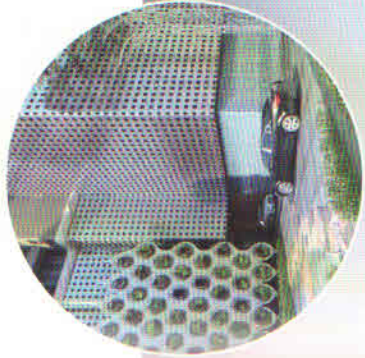
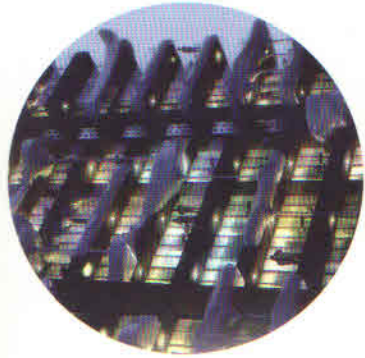
The design of this ultra premium residential development in a Mumbai suburb is a big bold attempt at rewriting the rules for such projects in India. It embraces the subliminal associations of opulence that Indians naturally make with ornament and dramatic design gestures reminiscent of palaces and temples. The design does this in a thoroughly contemporary context, integrating international influences, cutting edge building technology and innovative use of materials. The façade evokes the voluptuousness and intricacy of Gaudi's forms, marrying that with design details borrowed from traditional Indian architecture. The sensibility is subtly baroque but Indian in essence. Conceived as a modular construct of interlocking solid surface acrylic panels anchored to the building frame, each thermoformed and shaped to create a fluid, soft character for the cladding. Columns with a twisting fluted detail in various sizes and created in the same material adorn the façade and together with the thermoformed panels create a distinct character for the building. Column capitals will glow with embedded LED lights at night suggesting floating lanterns.

Heliopolis, MUMBAI



CURRENT STATUS

Design Stage



STEEL APPLICABILITY

Stainless steel complements solid surface acrylic and is used to create a monumental entranceway and a contemporary interpretation of a local 'jali' screen skin for the parking at every floor. Sculptural steel ribbon railings attached to glass at balconies is just one more touch of whimsy. This is probably going to be the first fully steel framed residential building in India. With considerably smaller column and beam sizes and completely column-free floor-plates, it will allow residents far greater flexibility in rearranging interior layouts as per preference or shifting needs. Embedded technology and a common interface will allow residents to be connected virtually as well, enabling community creation in multiple ways. In keeping with path-breaking nature of development, custom engineered elements will bring delight and pride of ownership to residents. Pioneering steel frame structure, flexible interior layouts, solid surface acrylic façade cladding, neo-retro Gaudi inspired styling, embedded intelligent technologies, interactive landscape elements, this property will bring forward future of high living.