



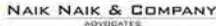
planet 3 studios architecture pvt. ltd.

www.planet3studios.com

an iso 9001 : 2008 certified company

about us

our clients-



Planet 3 Studios, a young, internationally award winning practice represents the vanguard of future-forward design in India. The essence of our way is to address the fundamentals through intense programming, offer solutions that balance wit and wisdom, keep it fresh and never lose the visual appeal. The focus is always on the context, the constraints and the opportunity that a project presents. We like to create designs that maximise the positive impact of design on the environment, use appropriate technologies & materials and source labour locally. The studio has evolved as a multidisciplinary practice with a rapidly growing eclectic portfolio of projects comprising institutional buildings, mixed use developments, adaptive-reuse projects, housing complexes, educational facilities, corporate offices, banks, malls, retail outlets, resorts, spas, hotels, restaurants, lounges, nightclubs, and even product design.

Design Values:

We are light on ideology and heavy on creativity and innovation. Not subscribing to any 'isms', we flirt with varied ideas before settling for one with the most relevance. We prefer solutions that are intuitive, of equitable use, have flexibility, involve low physical effort, work within context and constraint, communicate ideas visually, are experimentally satisfying, conform to codes, demonstrate environmental sensitivity and importantly, enable future-forward concepts. The stylistic representation of the ideas is what is best suited for the situation. For us, for any design to succeed, a clearly articulated line of thought should bind it all together with dimensional interpretation that is consistent and careful. Added to that, a conceptual departure that in hindsight would appear almost intuitive.

Co-creation:

We seek to define the design determinants by inhabiting and experiencing the end-user's needs and requirements. Designers from our studio dig deep through research and by physical experience to understand and formulate the design program. Out of this exhaustive process, we collect useful data and mine it for nuggets of insight and points of inspiration. Our design never happens in vacuum and stays rooted in context. The client is an active participant in the process and the design in essence is co-created.

Multidisciplinary Approach:

Not restricting ourselves to any particular segment of design opportunity has us energized with new challenges. We look at every design opportunity with a beginner's mind. This approach of getting involved in various kinds of projects across disciplines helps in cross fertilisation of ideas. Learnings from one situation, context, and type can be applied elsewhere, usually with surprisingly refreshing results.

Inventive Thinking:

'Why fix it if isn't broken?' does not work anymore. If something has been understood and done in a certain way for long, it probably needs a re-think. Challenging priori notions and truisms can open up possibilities in design. We gently question every thing, program sheets from clients, accepted stan-

dards, styles, trends, even us! By forcing ourselves to think out of the box, we flip ideas on their head and come up with solutions that are surprisingly different. Inventive thinking is our way.

Being Glocal:

We learn from everywhere, our studio is connected with the latest and the best anywhere. Enabled by information technology, ideas travel across the globe at dizzying speeds. Many of these hit us and we ensure in time application. Interconnectivity within a globalised design community is a reality. However, global vision stays anchored to local realities. It is this ability to marry local to global that in some ways defines our work. It remains forward looking, contemporary and global in its substance and yet draws deeply from local context.

Constructability Audit:

Within our studio, there is a mantra: Talk less, build more. We ensure that our concepts are rapidly implemented. Almost all of our studio work has converted into built projects. We keep pushing the envelope incrementally, but we remain insistent. Our design perspective is anchored in constructability assessment. If it can't be built, it is an academic exercise and we are not an academic institution. We design well and ensure that it is built proper.

Design-Build:

Any construct, be it interiors or architecture is finally a product. This needs to be delivered at expected quality standards, within specified time frame and at a budget. The reality of construction management and quality of contracting agencies leaves a lot desired. Many of our clients now insist that we as designers take singular responsibility for the design as well as delivery of the project. Through design-build, we assume the role of master builders and ethically and contractually answer for our creations in totality. We enjoy the flexibility, control and deeper satisfaction that these projects bring.

Studio:

Planet 3 Studios attracts top design talent from within and outside India. At our studio, creativity, skill and knowledge are essentials and everyone is encouraged to bring an inquisitive mind-set to work. We work in a non-hierarchical & communized environment, sharing and debating insights informally. With our interdisciplinary approach, project teams sometimes include behavioral psychologists, sociologists, MBAs as well as necessary technical consultants. This inclusive and open attitude is characteristic of our studio which manifests in composition of the team. Committed of work-life balance, the team actively participates in outdoor adventure, travel and community activities.

An architect with dual Masters in computing and project management, a B. Tech from IIT, an office assistant with Master degree in Political Science, a designer with dual Masters in International studies and Tourism, our studio attracts unusual talents!



learning



Vidyalankar institute of technology mumbai

Breaking new ground with radical re-think of campus architecture in India, this engineering college is devised as a contemporary *'educational village'* consisting of distinct faculty blocks connected by an interior promenade with spaces for student learning activities. Protected from the elements with an oversized roof and a porous skin, the building uses natural light and ventilation to conserve energy.



learning



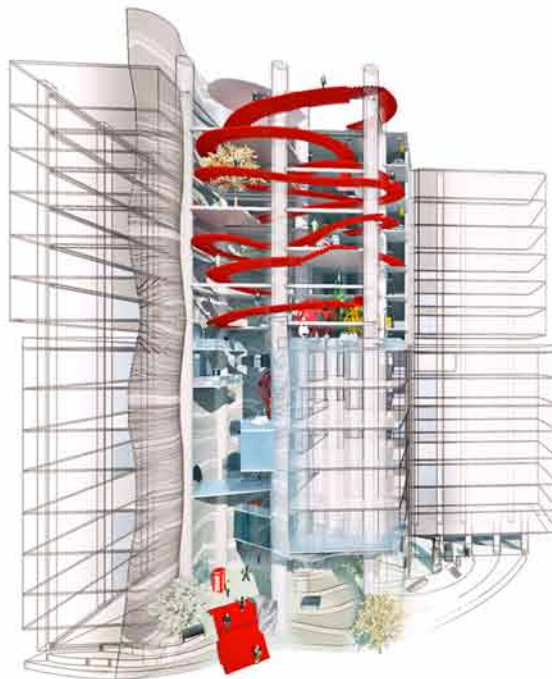
X-Block mumbai

This significant new addition to the larger Vidyalankar campus is an adaptive-reuse of a preexisting industrial structure that is being retrofitted into a very unusual learning facility. The program dictated multiple learning spaces and labs that would be available as a shared resource to the individual faculties of the earlier built building. Located just across an internal campus street, this structure directly faces the larger institute but defers in scale and significance.

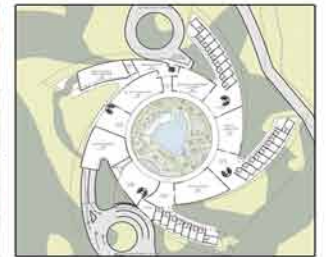
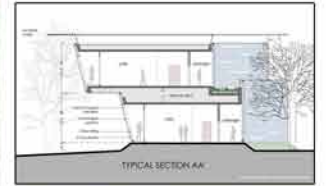


School of Business & polytechnic mumbai

This project is the third significant addition to the Vidyalankar Educational Campus. This new building had to manage almost the built up square footage in less than fourth of the plot area. As a tall structure, it risked becoming another faceless Mumbai college and more worryingly, a misfit with the rest of the campus architecture.

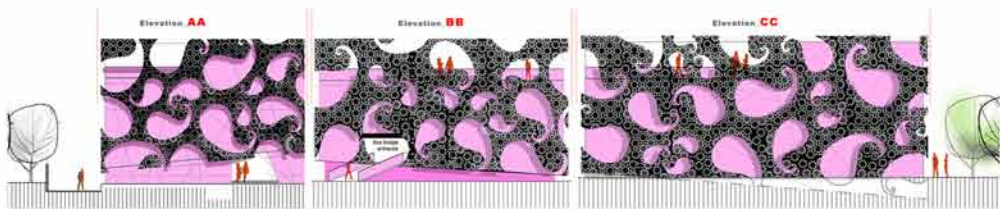


hospitality



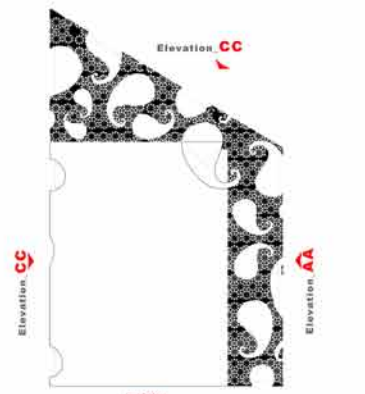
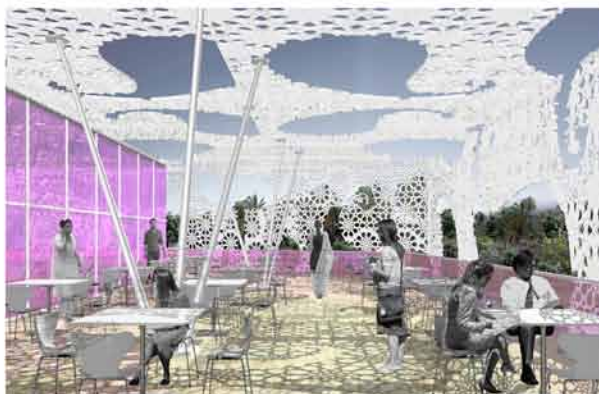
Panoramic 5 star Resort new mumbai

This proposed 5 star resort at the base of Karnala Fort has a unique design that ensures unhindered views of the surrounding lush landscape from every room in the property. Radiating from a central core with restaurants, spa, health club, café, a large pool and suites on the upper level, five arms extend into the landscape with out-facing rooms on two levels. The building skin in horizontal louvers is engineered to moderate harsh tropical sun. At night, some of these louvers light up in subtle colours, suggesting magical lanterns that float in air.

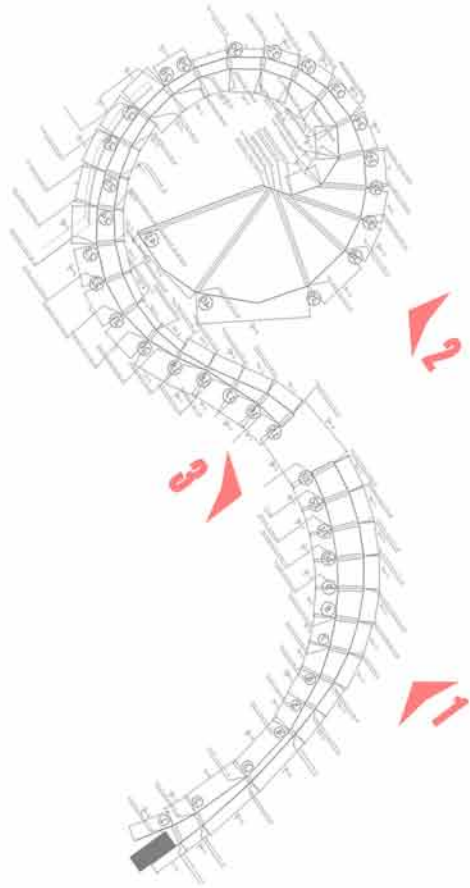


TCG Food court hinjewadi

A standalone food destination situated in the heart of International Biotech Park at Pune. The programming exercise defined the requirement of multiple offerings at various price points corresponding to patron need states. The solution was to split the volume over three interconnected levels of distinct design character enclosed within a common shell. To derive advantage of local pleasant evening climate, shaded terraces were inserted as breakout zones.



hospitality



T-crossover, SilverTube lounge, Ville Chaumiere Bangalore

In response of the client brief to create four entirely distinct eating spaces that provided choice ranging from fine dining to a lounge bar, crossover at the lower level is a multi-cuisine vegetarian restaurant with open kitchens connected visually by a carapatic steel partition and roof. on the upper level a fine dining with soaring 19' ceiling supported on tree like columns, tube shaped lounge bar with glass floor and an open air grill looking on to the road.



hospitality



Waves Bar mumbai

Thematically, the design of this bar draws from the many moods of water. Placid, stirred or agitated, water offers myriad existences to evoke and suggest. More abstractly, water expresses seamlessness, continuity and ability to find balance. We make positive associations of water with calm repose and the nourishment of body and soul. As a bar in a larger hotel, this property manages to become a destination with a distinct, hip, cool contemporary character.



Coffee Shop mumbai

String curtains mediate the view in this glass enclosed coffee shop in a business hotel. A curvaceous custom designed luminaire created out of the same stings as the window dressings is the key design element that lends a unique character to the space. Wall paneling along the length of the property is layered in cyan colour paint, brown wood and beige accents. This colour palette is echoed in the chair veneer and upholstery and the string curtains as well.



Terrace Restaurant mumbai

A rooftop hospitality space that has panoramic views of the surrounding city was made more interesting with the addition of a pool and lofty tensile roof that provided shade from the afternoon sun. Baroque inspired motifs grow on walls, floor and inside the pool, lending an eclectic character to the area. While the tent like roof turns into an outsized lampshade with up-lighting LED luminaries, backlighting accentuates the wall motifs at night.



hospitality



Mocha Mojo bandra

This project is unabashedly over the top and revels in sheer excess. We helped create a unique spatial experience for the patrons who will hopefully take in multiple cultural references and a design vibe to be transported to another age and time. Forever retro!

Grillopolis andheri

A monumental entrance door framed in GRC with significant detail appreciable up close sets the mood for the inside. A modern wooden barrel vault reminiscent of Turkish architecture, a barrel vault that runs the length of the ground floor terminating at an oak wood staircase leading upstairs. From the oriental lamps to lighting covers with stained glass to stone wall cladding to contemporary ornamental details on tables.



Hunan bangalore

The design of this Chinese cuisine restaurant in Bangalore steers clear of two dimensional elements and gaudy colours that define such restaurants in India. Private dining spaces are screened off in mesh fabric that represent and evoke outsized Chinese lanterns. Lit from the floor, they glow in the mood lighting of the space. The bar backdrop is rendered in subtle cloud pattern reminiscent of Chinese motifs and imagery. With a stark black wall that runs the entire length of the property as a backdrop and the overall neutral colours, the space defers to the cuisine that it serves.



villas



sylan villa



gaia villa



villas

siam villa



nouve villa



One dream villas

One Dream Villas: Drawing from the exceptional talent pool of collaborating architects, engineers, interior designers, and project management professionals, One Dream Villas is an initiative to make owning an exceptionally designed, superbly engineered and well executed villa an achievable reality. With the singular responsibility of design and build, the quality commitment is for the entire product. Explored in six initial themes, the villas promise a dream lifestyle of choice.



residential



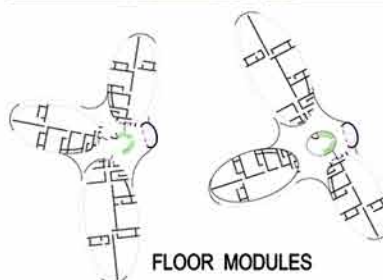
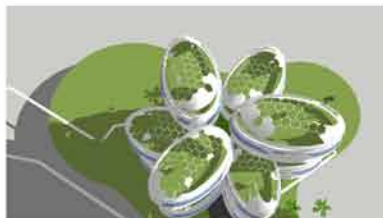
Heliopolis mumbai

In Greek mythology, Heliopolis is the abode of gods. This ultra premium residential development boasts of many firsts that make it path breaking and unique in character. Pioneering steel frame structure, flexible interior layouts, solid surface acrylic façade cladding, neo-retro Gaudi inspired styling, embedded intelligent technologies, interactive landscape elements, this property will bring forward the future of high living in India.

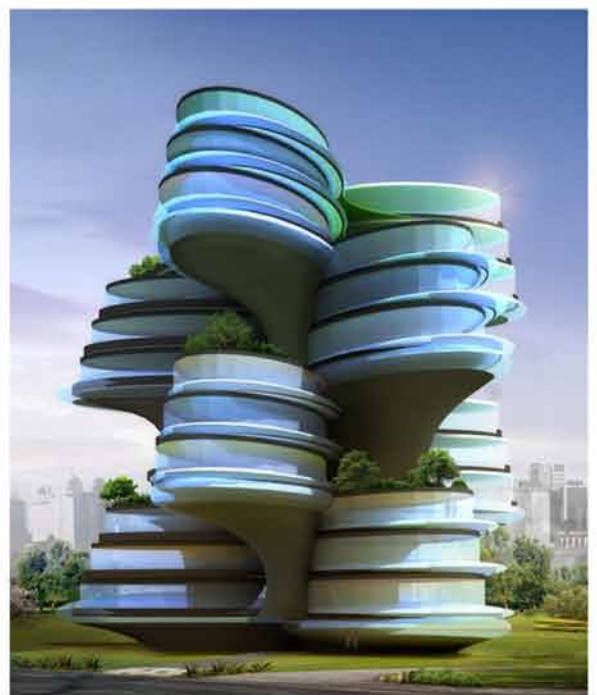


Heliopolis pune

Breaking free of standard issue orthogonal floor plans, this premium residential development in Pune combines the best of cutting edge structural engineering and future-forward contemporary styling. With massive cantilevered blocks anchored to a steel structural frame, sky-gardens at multiple levels, panoramic 360 degree views from all apartments and intelligent embedded technologies, this development raises the bar for such buildings worldwide.



FLOOR MODULES



residential



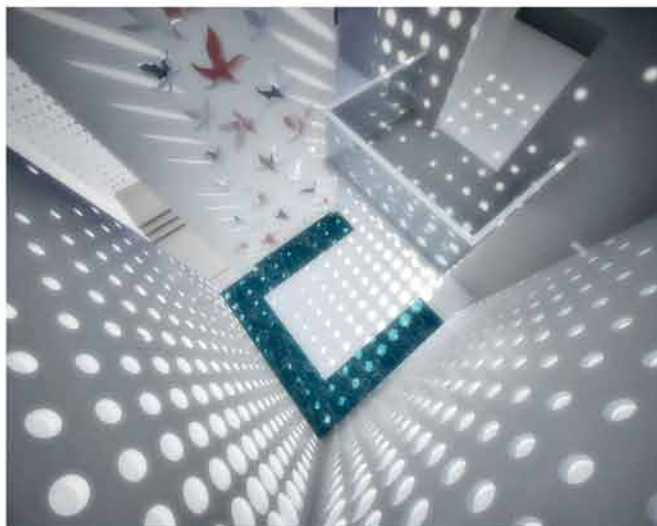
Sky Heights Pune

An affordable housing project in which the apartment layouts were created with space optimization and customer demographic in mind. Currently the first phase is almost complete and work on second phase to commence shortly.



Narendra Babu residence Bangalore

With cavernous light filled spaces, multiple split levels, custom engineered skin, embedded technology, water cascades and pools, indoor vegetation, this single family residence in Bangalore promises to become a contemporary design icon in the city.



residential



Silver Realty indore

The twisting, sculptural design of these twin towers for Silver Realty will create an iconic landmark in the city of Indore. With façade articulation linked to lavish decks, each apartment will have a unique outdoor space that differs in character and form subtly. This premium development boasts a series of firsts in terms of facilities for such developments in the city and ground-breaking expected in late 2011.



Sky Garden Tower mumbai

With RMJM from London being the **Lead Architects** on this project, this scheme will be a catalyst for the regeneration of the Kanjurmarg area of Mumbai and will form a cluster of new high rise towers. Radiating out from the central vertical park are 3 residential wings that open out to minimize overlooking and maximize views.



residential



Viento Villas pune

Lonavala has stunning views and its fabled monsoon mood with the mists, rain and wind made it an interesting location for a development of seven villas. Named after the wind, they embrace the elements with floor to ceiling operable windows and provide unhindered views of the surrounding landscape. Glass in tinted and toughened form overhangs the windows protecting from harsher sun and rain. A delicate steel structure in gunmetal grey defines the villa extents and the heavier concrete core provides the structural strength to the construct. Attached swimming pool, outdoor Jacuzzi, elevator, significant electronics and a curated interior with modern classics makes this an ultra premium development.



OVO pune

For this residential community of 250 apartments at Pune, the podium over the car park is a 1.5 acre fully landscaped garden free from vehicular traffic and shaded most of the day by the buildings that surround it. From this heart of the development, one can appreciate a refined design sensibility that balances natural stone with wood finish cladding over the façade elements. Inspired by 'Kandeels' or local lanterns, custom designed luminaries in steel float above each balcony, anchored by imperceptible cables. Wood plastic composite is the screening material for the ducts as well as the building overhangs. A club at the fringe of the development echoes the contemporary aesthetic of the residential buildings and is planned and located in a manner to provide maximum privacy around the pool area.





reception area



training area



recreation area



Ceat Mahal mumbai

Three distinct requirements and three distinct design responses within a single project make the refurbishment of RPG group headquarters at Mumbai unusual and exciting. The reception area extends the traditional Indian architectural character of the building exterior by adding more detail and variety in use of local materials and crafts in a modern context. The training space in the basement has a minimal, zen like feel that aids contemplative learning. Colour will be added over time by borrowing from the extensive art collection of the group chairman. The recreation area for the employees takes inspiration from the pristine white vernacular feel of Greek island architecture and the layout follows the natural unstructured character of these villages, with surprises at every turn and coming alive with all the activities that have been added.



corporate



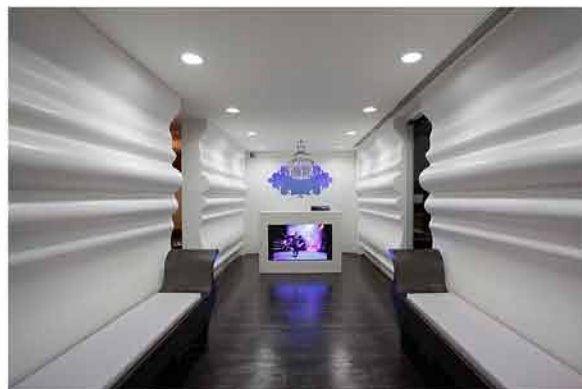
Syntel navi mumai

Steering clear of standard multicolor and almost two dimensional designs that define BPO spaces in India, we opted for a more crafted and design intensive approach using richer materials and complex forms that admit to the fact that the BPO age demographic is aspirational and capable of appreciating quality. Fluid forms and lines run on the ceilings, walls and furniture in a way that connects the whole space as one construct, effectively blurring the boundaries between them.



One Group mumbai

A dynamic young company with business interests ranging from sports goods to development wanted a workspace that fully expressed their desire to do things different and bold. Whimsically over the top, the design marries local Indian and western traditions with a contemporary sensibility. Outsized Jalis, Indian motifs, Baroque detail, Charpoy posts, bright colour and a dash of Bollywood bling make this a weird and wonderful space to work in.



corporate



Sybase BKC mumbai

Sybase is a multinational software solution firm, expanding rapidly in India. The new office space was thought of as an overall strategy initiated by the need to reiterate its corporate work culture and also define it as a brand. Our design approach was focused on enhancing the social environment, branding the company in 3- dimension and expressing and enabling its corporate culture, by means of architecture. Keeping overall design feel contemporary; we added some fun design elements in meeting and common areas.



Starwood Capital India mumbai

'Starwood Capital' was setting up their first office in India and gave us the mandate to design and build it. We delivered within an onsite construction schedule of 22 days, beating the design and construction quality standards of their overseas facilities.





Dawnay Day India Land maker towers

The client challenged us to do less. Observing the client's need we designed with clean contemporary styling, understated accents and fine fabrication maintain exclusivity. From the time one steps in, the office evokes certain awe because of quality of materials, forms and lighting used and the polished restraint in use. In that sense, it stayed true to and exceeded the brief.



HTL Aircon andheri

As the office for a leading air-conditioning solutions company, the space had to communicate the essential brand qualities of quality, economy and innovation. It also needed to respond to the nature of business and evoke creatively the whole aspect of 'Cool' as a metaphor laden with meaning and promise.





Gunnebo India

Not questioning the client's need for formal workspaces, we managed to fit in the requirements in the most efficient manner and consequently freed us a large bit of space to be used for a breakout, a hybrid use space. The centrally located area thus is a cluster of meeting rooms - open, semi open & fully closed. With a materials palette that stayed staid, we introduced some playfulness in this transition space by curling out bits of partitioning that provided glimpses of the activity inside or even creating an interesting caricature wall at the entrance to the pantry area.



Mapfre Asistencia

At mapfre we revitalized the standard office environment, 'inch by inch', using clean straight lines with contemporary minimalist feel of warm positive attitude. The client had a business set up in Spain; looking towards to set up an office in India, with a distinct identity of its own. Under constraints of fitting maximum workstations and storage we rendered an identity to the office by using elements like 'logo wall', the reception backdrop wall as a half height partition, contemporary lines with the use of colours like red, white and grey (their corporate colours).



IGN Data Solutions



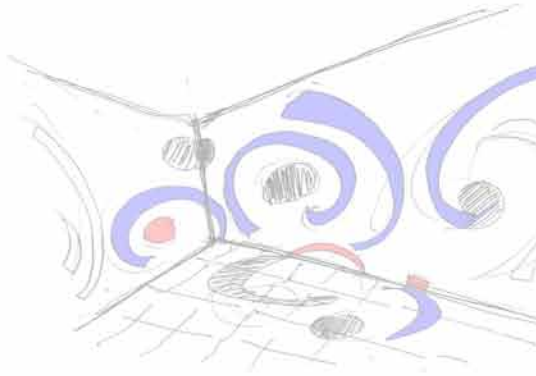


Viacom TV 18 Headquarters mumbai

When global media giant Viacom brought over 750 employees from a dozen different channels together in a new facility in Mumbai, integration of disparate identities, work cultures and demographics in single spatial environment was the challenge posed to us. We addressed the needs of commonality by standardized furniture, finishes and planning and balanced it with numerous channel specific interventions in form of breakout spaces, environmental graphics and meeting spaces lending distinct character to each cluster. Democratic distribution of natural light, interconnectedness between various floors and superior employee facilities distinguish this project.



retail



Building Products Mall-Sea Horse mumbai

The project posed a challenge of adaptive reuse of industrial warehouses that predated independence to a modern retail condition. While our solution defers to the historical context by retaining and revitalizing intricate metal and woodwork, it is bolder in attempting to tame the cavernous halls with out of scale embroidered patterns that reiterate the graphic quality of branding logo and colours. Similarly, a tree growing out of the front façade of a structure is evoked in 20 feet high AutoCAD tree stencil cutouts of plywood and pasted to inner walls.



Sakshi Art Gallery mumbai

Restricting ourselves to the brief provided, and not over-designing, we created a clean, bright and minimal look for the art gallery. Understanding, that the art displayed should get the maximum attention, the backdrop is kept all white. To moderate and modulate the amount of light in the space we used stretched fabric backlit ceiling which appends the minimal character of the space.



Science Centre, Shirdi nasik

Somaiya Group had a sugar factory at Shirdi that shut down a few decades back. To give something back to the local community, Samir Somaiya, the scion of the family wanted to build a Science Centre within the original factory structure. His grandfather who set up the factory and the entire family is held in high regard for their social initiatives and education is the forefront of the group's efforts. Samir's idea typifies the community centric, socially responsible development model promoted by the group.



Convention Center srinagar

Along with interior refurbishment of an existing convocation hall in Kashmir University Campus, the additional construction would create a fresh face for the building. A glass façade screened with wooden slates form local timber to bring in lot of natural light, a roof that evokes the undulations of rolling hills and mountains helps it to blend in better with surroundings, while still creating a certain distinct architectural character; we proposed such design features to make the new building forward looking, contemporary in character, but yet retain connection with its context.



Tourist Center srinagar

The original Tourist reception Centre in the heart of Srinagar city became an unfortunate victim of an ongoing strife and in its place the local government mandated a new facility to be built. Our proposal maintains the original plinth and suggests a new, contemporary structure inspired by the unique geography of the place and responds to extreme climatic conditions in winter. With abundant use of local craft and building materials and a forward looking design sensibility, we hope this building to become an iconic prototype for future reconstruction in the valley



banks

Making the case for delivering the best designed value for money, retail banking outlets constructed at multiple locations in India at a uniform cost and quality standard by a group of dedicated design & construction teams.



Axis Bank, Andheri



Axis Bank, Ulhasnagar



Axis Bank, Crawford

residential interiors



Bamashish residence malad



Mitra residence powai



Dharmindar Residence andheri

residential interiors

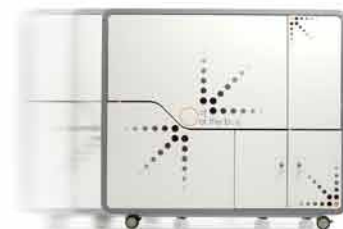
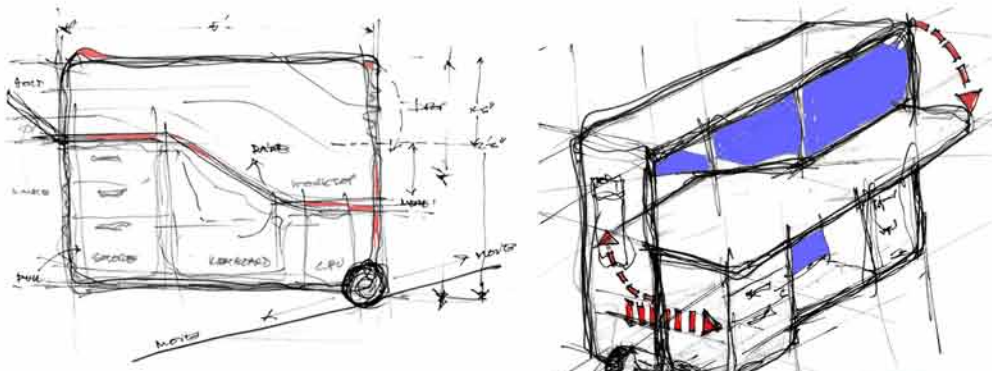


Deshpande House, dadar



Sudhir Arora Residence, malad

products



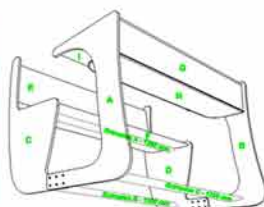
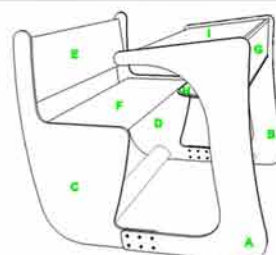
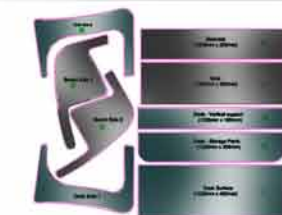
Workstation

Modular workstation has remained virtually unchanged since forty years. Assembled on site over weeks, it does not satisfy the need of clients looking for just in time capacity additions. Our solution, 'Out of the box Workstation' reduces that time to 3 minutes!



Classroom furniture

We offer a Do-It-Yourself school desking and seating system that aggressively optimises material usage, providing flexibility to adapt to different age groups, reduce the transportation volume to an unbelievable extent and provide the joy at constructivist learning through assembly.



installation exhibitions



Disturbia

Drawing from the works of Dan Havel, Will Alsop, Don Bates and Arnie Guinze, our installation at the 2008 IFJ show at MMRDA grounds-BKC Mumbai, was a response to the peculiar urban condition of Mumbai city. Created entirely out of recycled wood from Kurla Waste Market, it promised to make you pause and consider.

Lichtenstein Room

Inspired by furniture catalogues, Roy Lichtenstein created a series of iconic paintings of interior spaces that were characterized by the use of Ben-day dots, dark outlines and bold use of colour. Blurring the boundaries between art, architecture and design, our recreation of his two dimensional pop art setting into a real three dimensional space is an installation commissioned by Elle Décor Magazine and a leading paint manufacturer in India.



Merino Exhibit Space

Conceived as a public park in a busy exhibition space, this modular installation of 2'x2'x2' green cubes in the manufacturer's colour palette evokes an undulating lawn. Mounds segregate spaces and form an amphitheater seating to view a very large screen playing videos on innovation and design. An oversized tree in the manufacturer's solid surface acrylic explores the material's versatility. The charcoal grey background has printed diagrams of furniture on display. The space and its open public character takes precedence over the need to push products, speaking eloquently of the confidence of the brand in itself.



online shop

The online shop on Planet 3 Studios website directly retails original space and furniture design ideas that get prototyped. Most individual pieces can be customized as per particular needs and as per order. Currently limited to furniture, online shop is evolving into a product creation enterprise that will explore path breaking ideas that combine form, function and technology.



competitions

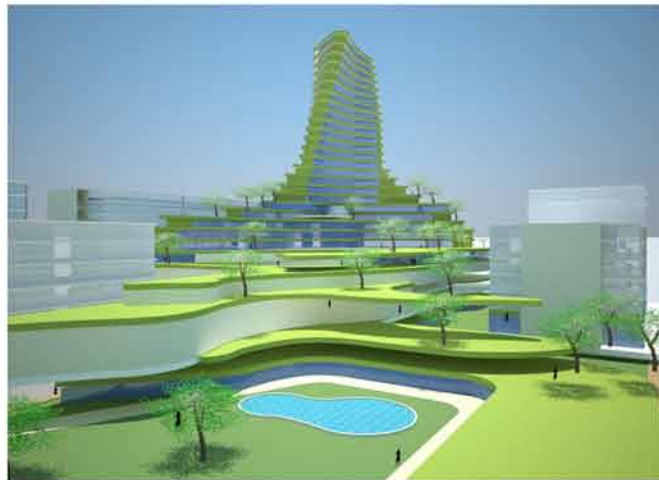
eVOLO skyscraper design competition

Skyscrapers have been springing up in fast-developing counties without careful consideration of the urban fabric, environmental effects, & quality of life. The 2009 competition calls for innovative designs that take into consideration the historical & social context, the existing urban fabric, the human scale & the environment.



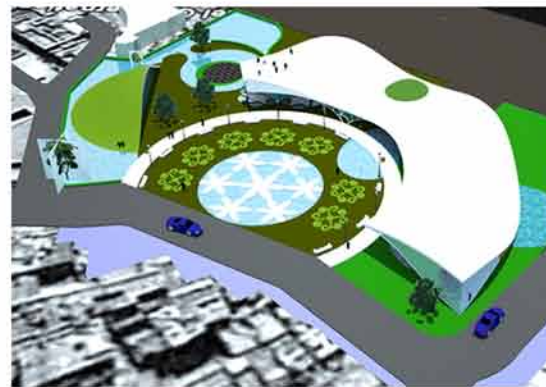
Spiretec IT Complex noida

Dispensing with the standard typologies that differentiate between building kinds based on intended usage, this building is conceived as a green urban park that rises organically from the site, gaining elevation and form with programmatic requirements and climate concerns. In an over built, high density environment.



Golden Temple Entrance amritsar

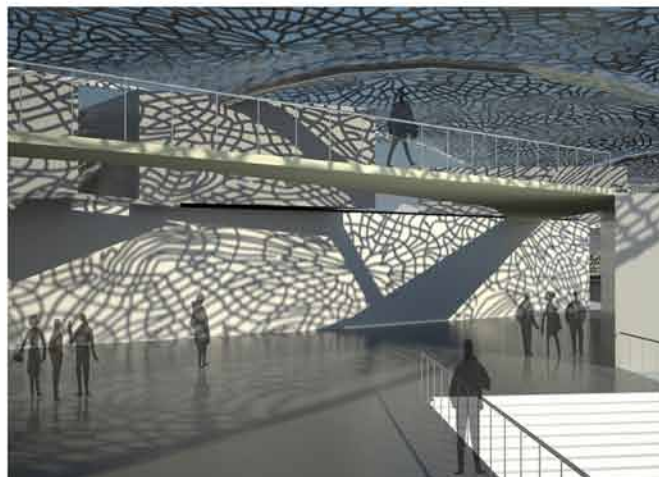
Golden Temple is one of the most iconic religious architectural symbols and instantly recognised all across the world. In keeping with the tenants of the Sikh faith, the design borrowed equally from Mughal and Hindu influences, syncretising it in a unique blend that was both remarkable and enlightened for its time.



National Institute of Fashion Technology

kangra, himachal pradesh

The sites elevation has distinct advantages considering the local context, one side it opens to the beautiful town of Kangra, and the top end, towards a breathtaking vista of the valley below and a series of radiating ranges beyond. For most of our projects, vistas from inside out and outside in are equally important towards achieving a stimulating environment and richer space content.





CNBC TV 18, 'Young Turks - Innovators' features Planet 3 Studios Architecture Pvt. Ltd as a young Indian achievers who are at the cutting edge of design. Planet 3 Studios is all about Redefining Spaces we live in.

- Shereen Bhan, Extract from a T.V. Show 'Young Turks - Innovators',

WOW Wild, crazy, funky. I like this project. It's a big feeling inside: lots of variety of space, color, light - very kinetic architecture - **Jeff Lackney**

The planners and designers for this school have truly pulled off a dynamic learning environment, providing educators much to work with. I really appreciate the creativity in design that is coming out of new schools in Asia - **Peter Brown**

- Jury Comments, Design Share 'Honor Award', 2007



The project is able to display a subtle shift & change in experiences from one place to another. It is rich at the same time simple, not over done & very comfortable. There is an air of sophistication & a sense of order about it with the controlled balance.

- Hin Tan, Jury comments,

The Innovative Interior Design Award, A+D & SPECTRUM FOUNDATION 2007

The \$500 third prize was given to Planet 3 Studios in Mumbai, whose Out of the Box Workstation is a mobile office for two, with all workstation components that all fold up to become a 48-by-60-by-18-inch box. The jurors were impressed by the workstation's portability and its potential use at disaster sites or in temporary offices.

- G. Paul Burnett, Extract from an article in New York Times

'Planet 3 studios is a young design group that is taking an important role in shaping the future of design in India. In building solid programmes and conceiving design solutions that form the basis of the programme they never leave out the aspects of wit, freshness and aesthetics. Most of all what they pursue is innovativeness.'

- Extract from an article in BOB, international magazine of space design

'Planet 3 studios seek advice of behavioral psychologists and sociologists as much as technical consultants. Their work is being increasingly applauded and they have won numerous awards and competitions in recent times.

- Extract from an article in DESIGN AND DIALOGUE

'Congratulations! You'll see that we have chosen to include almost all the images you sent. We reject many projects outright. For projects we do select, we usually only include one or two images.'

Bryant Rousseau

Editorial Director, Architectural Record, McGraw - Hill Construction USA

'Mumbai-based Planet 3 Studios is a young design firm, which brings creativity, knowledge & attitude to the projects they undertake & this in turn makes the designs look smart & modern with a contemporary accent.'

Extract from an article in Indian Architect and Builder Magazine



'We engaged Planet 3 Studios to undertake a creatively challenging task of making a recreation centre in our Office complex. Planet 3 Studios has demonstrated a high degree of out of the box thinking in arriving at an appropriate concept for the design. I found them to be very open minded to new ideas and were able to improvise and innovate at every stage of the evolution of the concept and design and we were all very happy with the final output.'

-Harsh Goenka, Chairman , RPG Enterprises

Though the Design-Build concept is getting popular in other parts of the world, the traditional mode of construction, Design-Bid Build, still remains the primary option for construction in India. Planet 3 Studios Architecture Pvt. Ltd., Mumbai, Industry partners with Design Build Institute of America (DBIA) have taken the initiative in implementing the Design Build Concept locally.

-Extract from an article in Index Furniture Journal

'Proof that design can promote educational progress, especially in a developing country, Planet3 Studios Architecture converted a warehouse into a showstopping biomedical engineering building for the Vidyalankar Institute of Technology in Mumbai.'

-Meghan Edwards, Editorial Assistant , Interior Design Magazine

'Planet 3 Studios is a design centre where creativity, skill and knowledge are essentials. Their work culture focuses on addressing the fundamentals through intense programming and offer solutions that balance wit and wisdom, keep it fresh and never lose visual appeal.'

Extract from an article in Society Interiors Magazine



'Kalhan is a great professional who loves his work and delivers more than expected. He manages a great team of professionals and he is very dedicated to his work. Kalhan is man of word and you can trust him both in commitment and deliverables. Working with him was great and he designed and developed a unique concept for Mapfre offices in India.'

-José Luis Ortiz Castello, General Manager, Mapfre Asistencia,

Planet 3 Studios Architecture Pvt. Ltd. Design Kalhan Mattoo Santha Gour Indian

Planet 3 Studios Architecture pvt. ltd.
505, tarishka, next to big bazaar,
off w. e. highway, akurli road,
kandivali (e), mumbai-400101
tel: +91 22 6699 5442/6782 5700/ 2885 2735
telefax: 6699 5443
url: www.planet3studios.com email: info@planet3studios.com

awards

HONOR Award from DesignShare,USA, 2007 (for Vidyalankar Institute of Technology)

'Multiplicity' International product design award, USA, 2008 (for Workstation Design)

Archi Design Awards for best Institutional Building 2009 (for Vidyalankar Institute of technology)

Archi Design Awards for best Hospitality project 2009 (for Crossover, Bangalore)

IAD Awards, Excellence in Interiors & Architecture Designs.
Best Interior Designer, 2009 (Hospitality)
Best Architect, 2008 (for Commercial performance)
Excellence in Int & Arch Designs'08 (Best Architect for Commercial Performance)

'Emerging interior design practice', Institute of Indian Interior Designers + MK, National Award 2008 (for General body of work)

'Emerging interior design practice', Institute of Indian Interior Designers + MK, Regional Award 2008 (for General body of work)

Institute of Indian Interior Designers + MK, Regional Award 2008 (for Public / Institutional interiors: Vidyalankar Annex and for Hospitality interiors: Mochamojo lounge)

'Young Designer of the Year 2007', Better Interiors Excellence Award (for General body of work)

Indian Institute of Architects award for design of public spaces 2007(for Vidyalankar Institute of Technology)

Excellence in Design of Public Spaces, 2007 Better Interiors (for Vidyalankar Institute of Technology)

A+D Spectrum foundation Award 2007 (for Vidyalankar Institute of Technology)

Institute of Indian Interior Designers + MK, Regional Award 2007 (for Seahorse Building products mall for Retail and IQN Office for Workplaces)
15.Godrej IIDD Workstation Design competition 2007 (for Workstation Design)

Institute of Indian Interior Designers + MK, Regional Award 2007 (for Corporate Interior Design: IQN Office)

A+D Spectrum Foundation Award 2006 (for Hospitality: Crossover)

Institute of Indian Interior Designers National Award 2006(for Hospitality: Crossover)

Innovation in Stainless Steel, Jindal Award 2006(for Hospitality: Crossover)

'Young Designer of the Year 2005', Indian Architect & Builder Magazine (for Single Family Residence at Mumbai)

