

# Inside Outside

THE INDIAN DESIGN MAGAZINE

ISSUE 290

AUGUST 2009

Rs 50

## Featuring:

Design Combine, Amit Savor,  
Rajiv Majumdar and Sudhakar Pai



## Award-winning projects by:

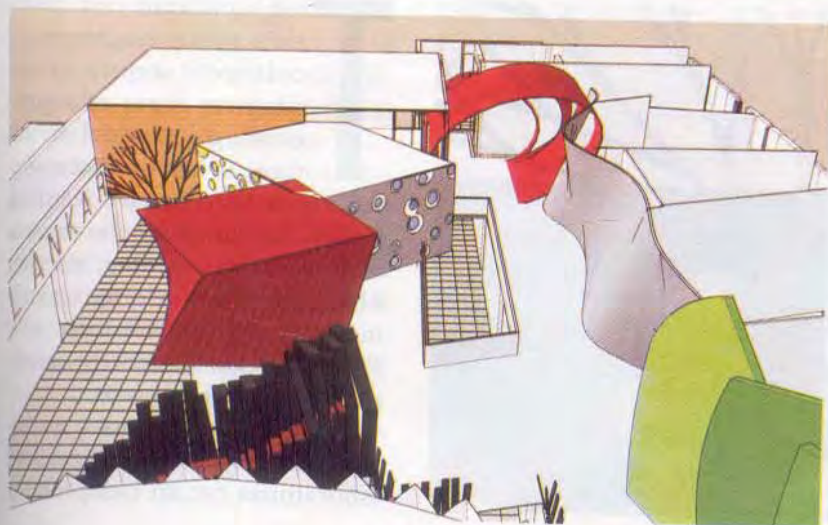
Gayathri & Namith Associates, Sanjay Puri Architects, Planet 3 Studios, Aamir & Hameeda Associates,  
Collaborative Architecture and Vibha Hutchins Design





# Daring Design

PHOTOGRAPHS: MRIGANK SHARMA,  
INDIA SUTRA, COURTESY THE ARCHITECT



Planet 3 Studios reiterates their radical design expertise with a daring addition to a Mumbai college campus: X Block, Vidyalankar Campus, which won them the runner-up (west) IIID Award in the Public/Institutional category.



They gutted the core and put in a mezzanine supported on an independent steel structure. The partitions and



**T**his significant new addition to an engineering college campus is an adaptive reuse of a pre-existing industrial structure. It has been retrofitted into a very unusual learning facility. Enthused by the success of their earlier building, the faculty and the students unanimously elected to have the Planet 3 team design this additional 35,000 sq ft space.

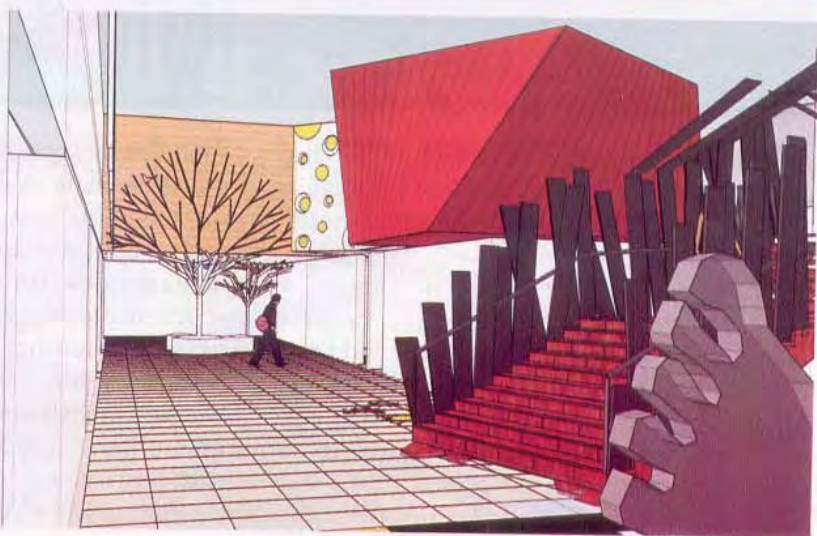
The architects were asked to create multiple learning spaces and laboratories for an independent

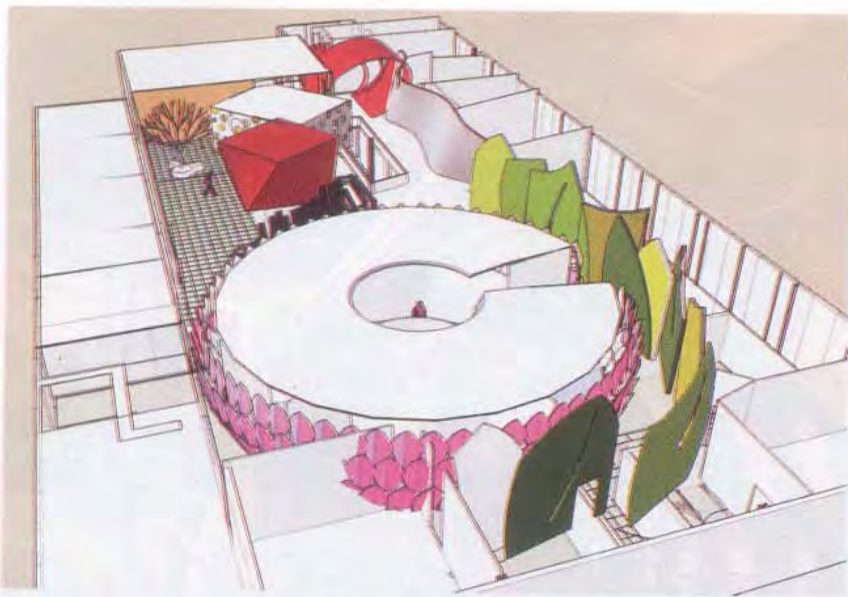


elements were of lightweight materials which bend, twist and turn to become display panels for students' work.

bio-technology and life-sciences centre. Located across an internal campus street, this centre directly faces the larger institute but differs in scale and significance.

A study of the earlier building gave the architects an insight into what had been appreciated by the end users. Explains Kalhan, 'We decided to push the envelope further with more design interventions that challenged accepted notions of a learning centre. In a sense, this building is an intellectual and physical extension of the earlier facility. As before, the focus





While some elements such as the leaf-like and cellular partitions clearly show what they are used for,

remained on the needs, wants and aspirations of the students and faculty who were to inhabit and accept it as their own.'

They gutted the core and put in a mezzanine supported on an independent steel structure. The partitions and elements were of lightweight materials which bend, twist and turn to become display panels for students' work; graffiti strips; light sources; cladding in

the shape of a lotus petal; colourful organic patterned laminate skins; cellular screens and ventilators as signage letters. A couple of peepul trees with a hammock lie in between large leaf-like partitions, adding to the whimsical touches.

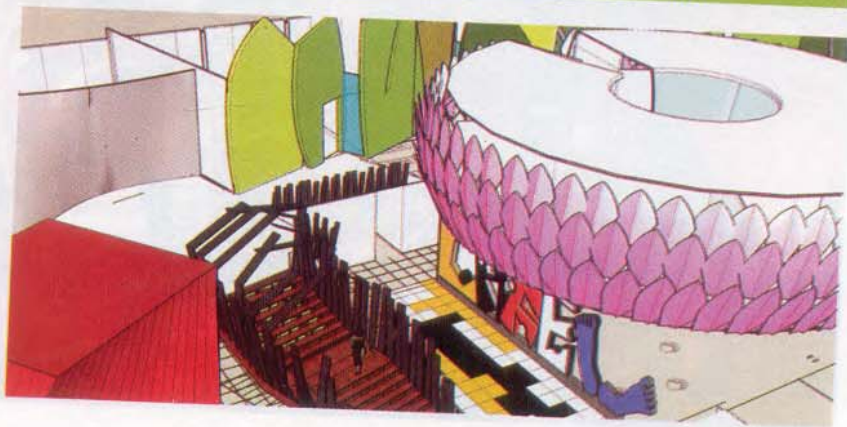
A staircase with a railing evoking frayed, dried wheat stalks rendered in wood and steel; a meeting room with a twist; a game board near the entrance; a strate-

gically punctured roof with skylights illuminating the interior corridors and oversized letters that write café and demarcate the separation between canteen and passageway; all reiterate the unique nature of this facility.

The design borrows heavily from the language and forms of nature and the graphic quality of most constructs reinforces its intended use.



others, like the lotus centre allude more obliquely to latent Indian symbolism... a seat of learning!





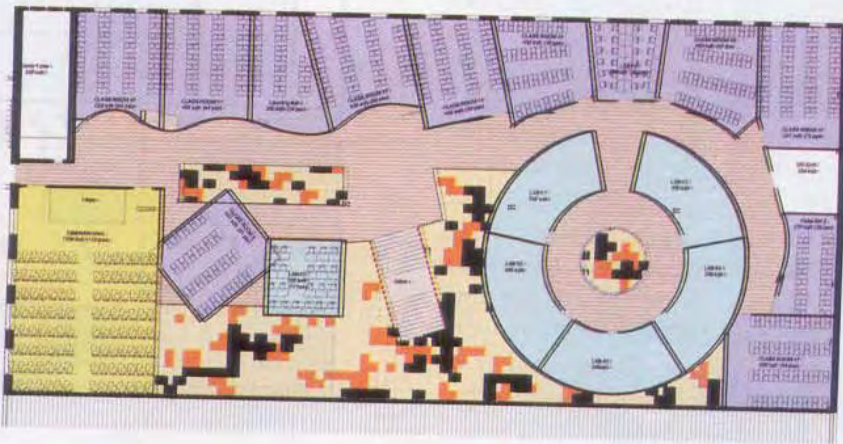




‘While some elements such as the the leaf-like and cellular partitions clearly show what they are used for, others, like the lotus centre allude more obliquely to latent Indian symbolism...a seat of learning and the lotus is one such – an association that we expect the end users to discover on their own.’

A building skin evoking tall grass stalks swaying in the wind, wraps over an external patio that serves as a partially shaded public space. The architects’ intention was to ease the transition between inside and outside and continue the energy of the interiors into the building exterior. With street furniture, service

The design borrows heavily from the language and forms of nature and the graphic quality of most constructs reiterates its intended use.



# ARCHITECTURE



## FACT FILE:

Location: Wadala, Mumbai, India  
Planning (Facade): Dec '07 to Feb '08  
Planning (Interiors): Sept '08 to Nov '08  
Construction (Facade): May '08 to Oct '08  
Construction (Interiors): Dec '08 to Feb '09  
Area: 35,500 sq ft  
Cost of construction: Rs 5 crore  
Delivery: Design Consultancy  
Architects: Planet 3 Studios Architecture Pvt Ltd  
Design Team: Kalhan Mattoo, Santha Gour Mattoo, Rashmi Pachgade, Aditi Gautam, Biswarup Deb Roy, Kanwaldeep Kapoor

from the canteen and Wi Fi facility, it is expected to be another space that students will accept as their own. At night, the coloured glass punctures opening from the canteen, and reflective skin surface add drama and turn this into a really exciting college to learn and hang out in.

The design team hopes that this project will go on to establish that building typologies have to evolve to keep pace with changing needs, and design can truly contribute towards communicating and establishing progressive ideas. There is after all no better proof of intention than the built form. **ib**

**The focus remained on the needs, wants and aspirations of the students and educators who were to inhabit and accept it as their own.**

