

# DESIGN TODAY

May 2007 Rs 35

SPACES ETCETERA

ISSUE FOCUS

# STEEL

INTERPRETATION, INITIATIVES, TEXTURES

**HOUSE** PENTHOUSE, SURAT  
**LOUNGE BAR** TUBE & VILLE CHAUMIERE, BANGALORE  
**OFFICE** YES BANK, MUMBAI  
**HOTEL** LE MERIDIEN, DELHI  
**DESIGN CHRONICLES** THE STORY OF STEEL

**SPECIAL STORY**  
LAURIE BAKER A RETROSPECTIVE

**PLUS:**  
INTERIORS A HOUSE IN BANGALORE  
THIS & THAT QUICKSAND  
ART JEHANGIR SABAVALA

# CONTENTS

## ISSUE FOCUS STEEL PLAY

STAINLESS STEEL IS RIGHTLY dubbed the metal of the future. Its timeless looks, pliable form and visual appeal keep the green metal ahead of the game. Design Today offers a glimpse of stainless steel interpretations in world design and architecture, from the Delhi Metro, to sculptures, buildings, stairs and petrol pumps



42

## NATURAL ACT



DELHI-BASED SAURABH Dakshini and Anubhav Sarvariya of Studio Organon had to circumvent a mousetrap space to create a design studio for their client. They redefined boundaries sans walls, using natural Indian materials in a contemporary idiom. Sunalini Mathew pays a visit

74

## INTERIORS LIGHT BLEND

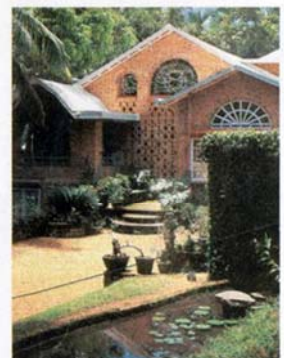


ARCHITECT HUSNA RAHAMAN'S recent work, a four-bedroom house in Bangalore, challenges accepted boundaries of design, with geometrical patterns offset by organic shapes, layering colours and textures. Stuart Forster meets the architect to discover her design philosophy which includes clean lines, lighting and spaciousness

62

## SPECIAL STORY ODE TO BAKER

LURIE BAKER'S BUILDINGS are synonymous with skill, earthiness and perfection. This piece is a tribute to the man who pioneered economical structures and championed the medium of organic architecture especially in Kerala. Eugene N Pandala presents a retrospective of the works of this master craftsman



82

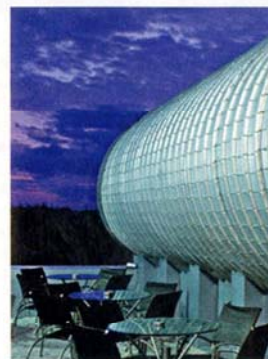
## HUES TALKING

A SERENE ALL-WHITE HOUSE IN Gurgaon pays homage to space and a sense of lightness in its surprising use of steel, marble, glass, wood and colour accents. Bronze and steel sculptures add to its aesthetic appeal. Design Today takes a closer look at architects Anjali and Raman Shukla's creation



68

## ISSUE FOCUS: STEEL STEEL ENERGY



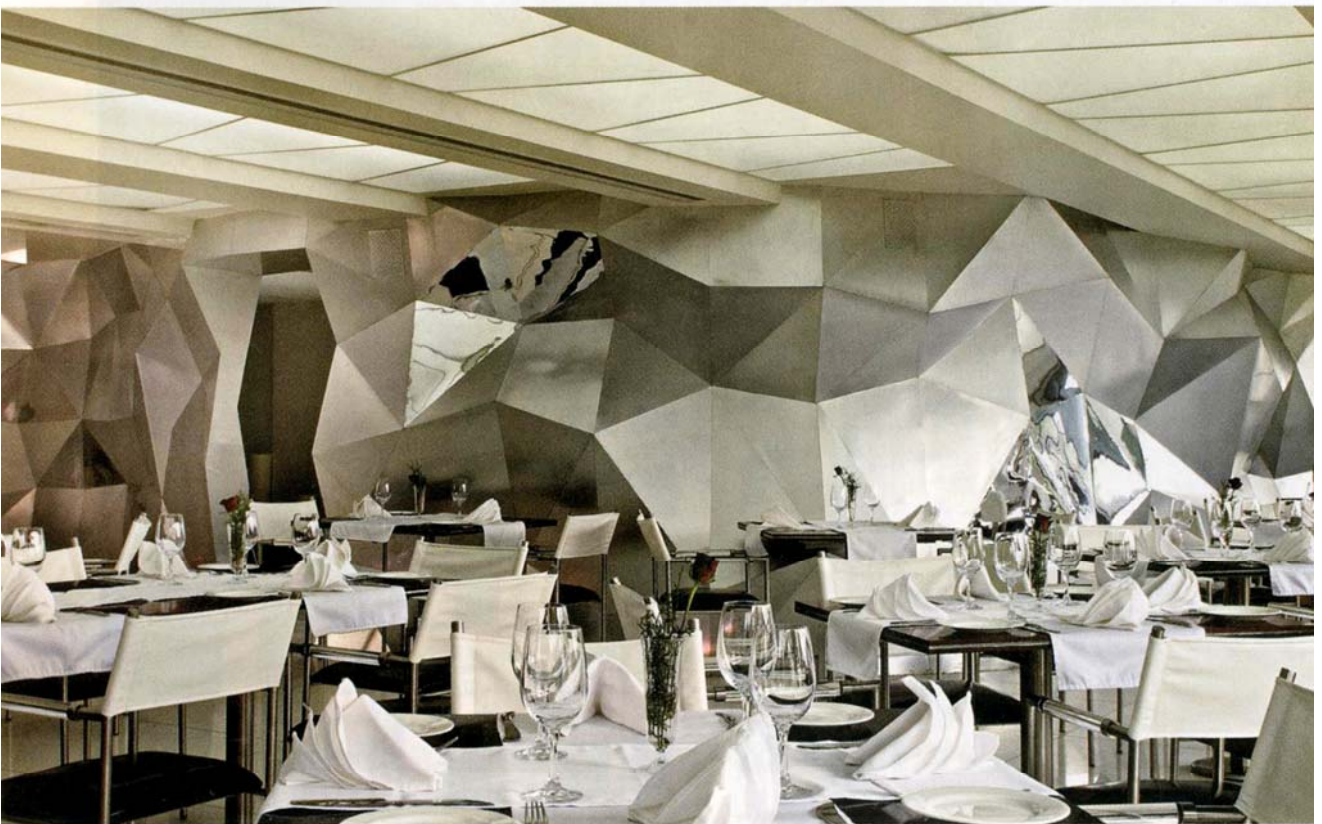
PLANET 3 STUDIOS Architecture Pvt Ltd designed Tube, a lounge bar and Ville Chaumiere, a fine dining restaurant, in the posh environs of Bangalore's Indiranagar. The designers used steel in a unique fashion to synergise the spirit and experience of dining and entertainment

88



### T CROSSOVER

The interior design at T Crossover, a Bangalore restaurant is defined by a crushed-paper inspired stainless steel 'carapace' that runs the entire diagonal length of the restaurant. The polymorphic construct, designed by Planet 3 Studios Architecture Pvt Ltd, visually connects the open kitchen and the front glass façade, providing a contemporary backdrop for the table setting. Constructed out of plywood clad in high quality brushed stainless steel skin laminate, it reflects and disperses light in a fascinating way. The impeccable hygiene and fashion forward client requirements necessitated the use of a hard, easy-to-maintain surface, making steel the natural choice. The 'carapace' was an award winning entry at the Jindal Stainless Steel Innovation Awards. The interiors of this restaurant was recently revamped to suit a Chinese theme, though this wall remains intact.



# STEEL ENERGY

PLANET 3 STUDIOS ARCHITECTURE PVT. LTD. DESIGNED TUBE, A LOUNGE BAR AND VILLE CHAUMIERE, A fine dining restaurant, in the posh environs of Bangalore's Indiranagar. They used steel in a unique fashion to synergise the spirit and experience of dining and entertainment

Set against the sky, atop a three-storeyed commercial complex in Bangalore's Indiranagar, is a twin dining experience, distinct in design style and use of space, but connected in the use of steel. The entrance is through a terrace laid over with white gravel and planted with tables and chairs fashioned out of tubular steel and composite material—a representation of what is to come.

This sit-out often turns into an impromptu grill, given

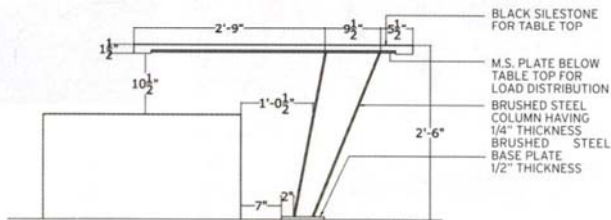
the city's climate and acts as a waiting area serving both the eateries. From the outside, Tube, a lounge bar, is a distinctively-shaped cylindrical construct, created with hollow tubular steel sections with a galvanised sheet roofing skin. The other eatery, Ville Chaumiere, is a fine dining restaurant. Its undulating roof is the distinct element in an otherwise conservative construction. In its interiors, Tube uses steel as its main design tool—its body and structure being fashioned out of the material, and visible from the inside. Ville

Tube, a lounge bar, is a distinctively-shaped cylindrical construct, created with hollow tubular steel sections with a galvanised sh

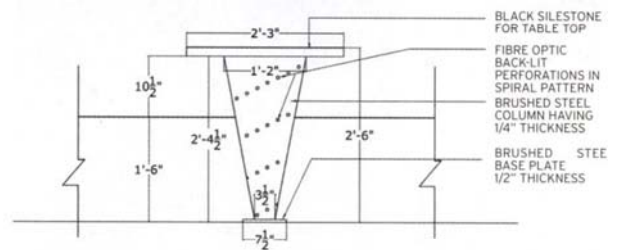




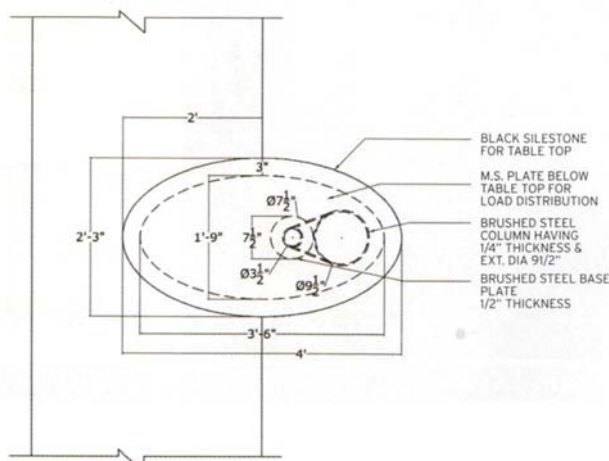
roofing skin. It sits on a structural grid, raised three feet off the ground, with an aluminium body as cladding



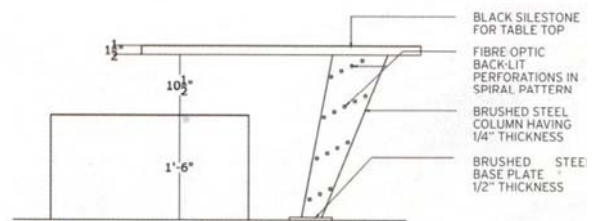
SECTION



FRONT ELEVATION



PLAN



SIDE ELEVATION

TABLE (LOUNGE) DETAIL



Ville Chaumiere is built around two clusters of tubular steel poles that branch out like a tree reaching upwards. Between the



Chaumiere, on the other hand, uses a nuance of steel in a single design element—the steel, tree-inspired members, that act as aesthetic aspects and structural supports as well. All the other features of the restaurant are played down, to give this centre stage.

As you enter Tube, you are struck by the pipe-like use of space. The bar and DJ console at the far end, the dance floor that goes down the spine, and seating flanking the floor, heighten the elongated effect. The intensely blue-hued ambience, created through effect lights that produce psychedelic patterns, gives this lounge bar a spaceship-like appearance. The colour is heightened with the use of soft pearly-blue, faux leather quilting in the vaulted section of what forms the ceiling. The quilting follows the curve of the cylindrical shape, coming down to where you can reach out and touch it.

**At the Tube, pearly-blue, faux leather quilting, follows the curve of the cylindrical shape, coming down to form the seating**

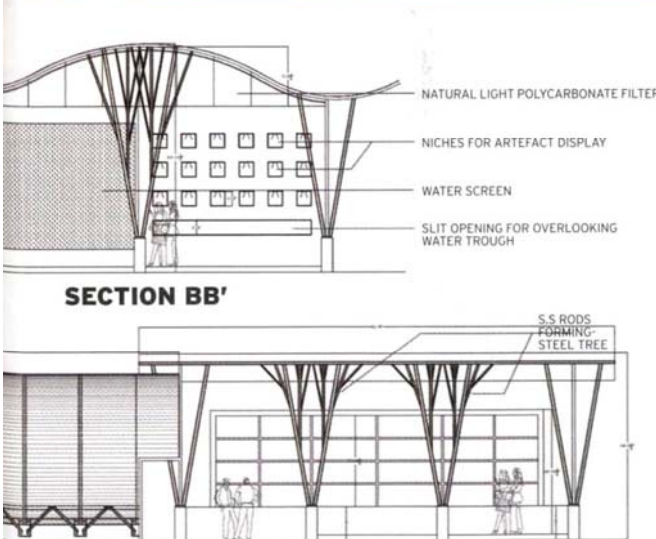
The dance floor, down the centre, is laminated glass, with the base tubular steel structural system visible through it, reminiscent almost of a complex industrial design structure. Lasers stream across the underside of the dance floor, filled with artificial smoke.

Lining the sides of the floor is the seating area—a combination of bar stool seating in steel and faux leather. At one end of the tunnel-esque design is the bar, with the DJ console hovering above, given support by a shelf that protrudes from the wall and hanging steel cables.

Tube serves as the perfect transition area, where young executives can unwind, later crossing the terrace to Ville Chaumiere, for a gourmet dinner. Ville Chaumiere is built around two clusters of tubular steel poles that occur towards the centre of the restaurant. They branch out upward to form a tree-like structure. The undulating roof structure, with punctures for concealed lighting, form a canopy, much like a large tree enveloping all in its shade.

On the sides of the space, similar steel branches emanate upwards, but in lesser density. Their spreading shape is intensified by the placement of upward lighting between its struts. Between the two dense steel rod clusters is an oversized wine rack, that draws the eye and seems to bask in the shade of the steel tree. The two dining outlets intersect at a point where spatial and functional energies fill the space with robust passion.

—Compiled by Sunalini Mathew



steel clusters rests an oversized wine rack