

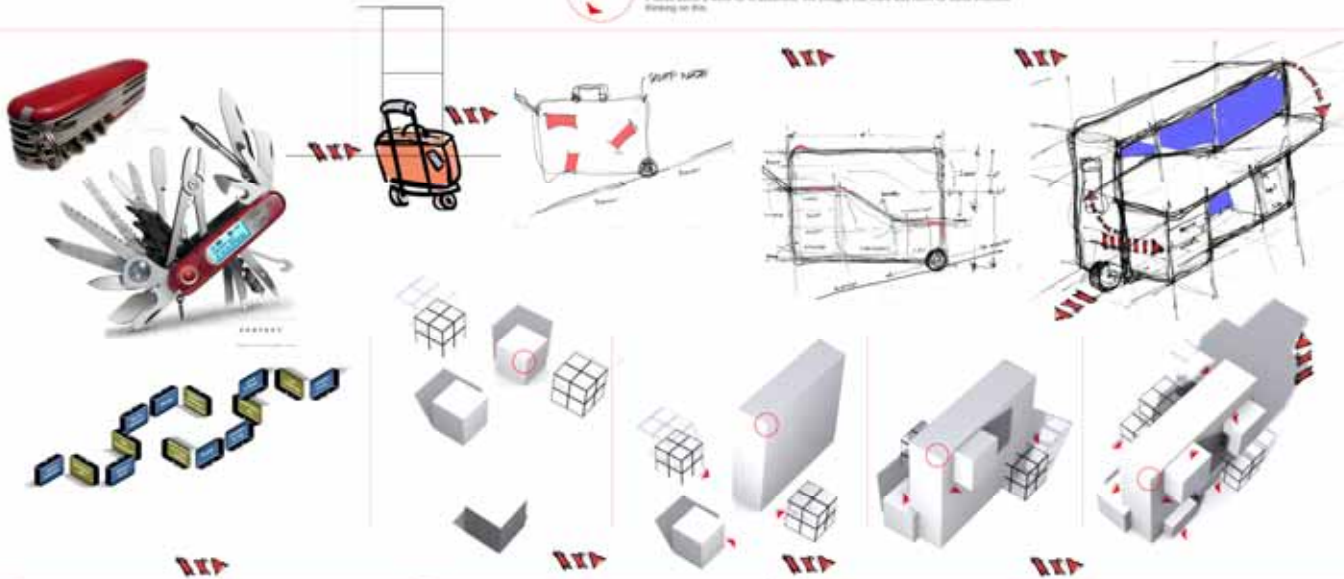
THINK OUT OF THE BOX

CONTEXT

India is currently experiencing extraordinary demand for office spaces to satisfy the needs of a fast growing economy. We are frequently asked to deliver just in time capacity additions to existing facilities or offer built to suit solutions or developments that allow long lease time margins for clients. Our response over various projects has led us to look at alternative care fully and re-evaluate their individual production and assembly to the overall project delivery. In such critical circumstances as the workstation, usually delivered in site as a set of components, it takes about a week for its assembly. We thought that there was room for some creative thinking on this.

DESIGN PROGRAM

We defined a design program as a work set of desirable attributes. The most important requirement being ready to use convenience. Followed closely by flexibility, mobility, scalability & transparency, ease of use and ease of installation, precision, in keeping with our general design philosophy, the solution had to be clever and intuitive.



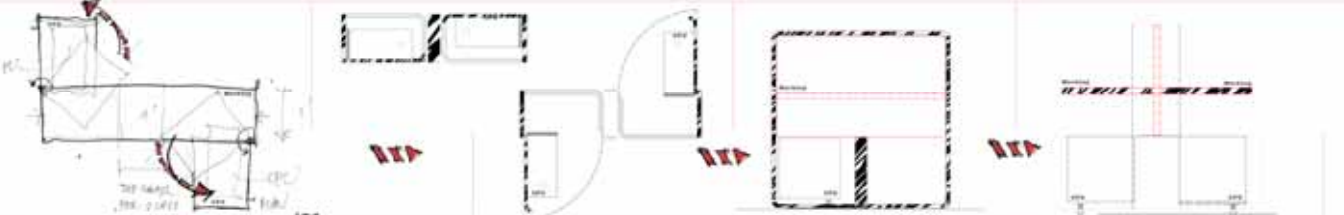
Size 10' - Storage elements

DESIGN SOLUTION

Our solution, upon liberating side-out of the box A rectangular form, is a simple shelf, open up to reveal two perfectly functioning workstations. It takes no special skills and takes minutes to install. The desk itself, is in using the surface of the box as a slight arrangement of components that unfold in a linear and sequential manner. Fixed within are two storage columns, pre-wired LCD monitors, keyboard tray, CPU stands, cable organizers and of course, the two table-tops. Necessary cutting to enable plug-and-play to happen, pre-empted. The size of inventory on hand, storage and can be moved around to meet if it needs required to layout design.

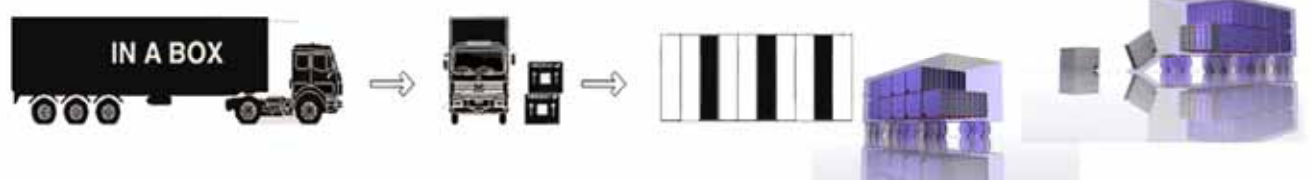
This workstation can be 'fold' with the same ease as it takes to open it. It encourages multiple space design by its flexibility. The fact that workstations can easily be moved to occupy a small component of a large space can potentially open it up to other uses. This can be especially useful in cases where occasional utility spaces have to be acquired and maintained at a premium. Each workstation offers opportunity for customization and personalization. Hardware, activity signs, group boards, info-panels, all can be added as per requirement. The workstation dimensions allow a 4x4 unit to be shipped within shipping constraints. These folded workstations can be transported in their own packaging.

Size 10' - on moving process



They Stacked & Transported Via Shipping Containers

Size 10' - The imagined that BPO's, KPO's and Call Centers that grapple with near 'break or' but in low capacity addition' would naturally be interested in the product in this space saving situation. Storage tables have been replaced by CPU stands and their all dimensions optimized to keep with the requirements of a KPO.



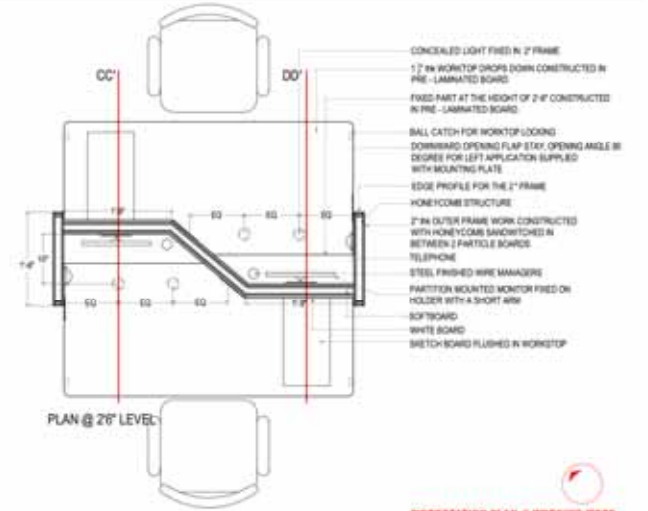
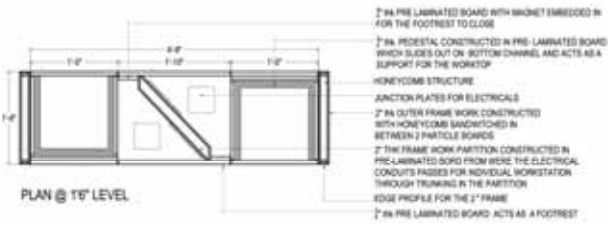
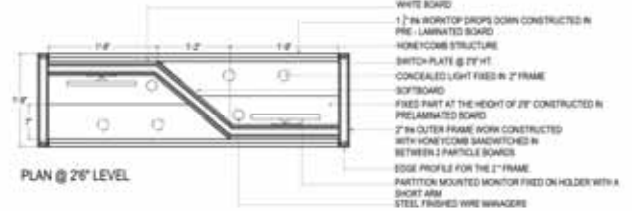
Various Workspace Arrangement Possibilities

Prototype Development



PROTOTYPE DEVELOPMENT

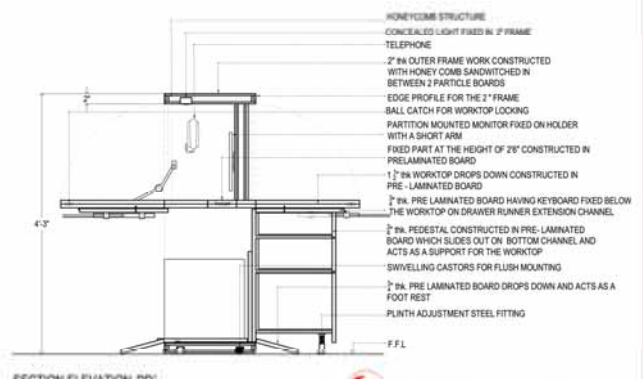
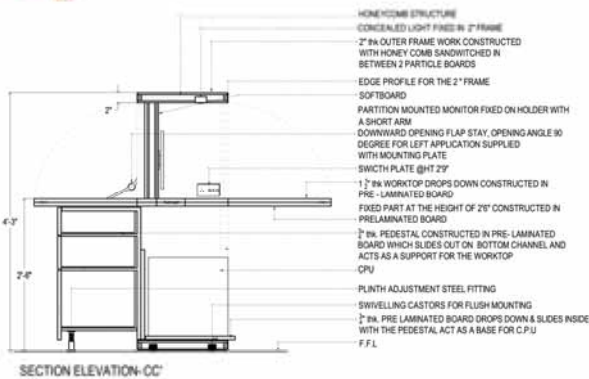
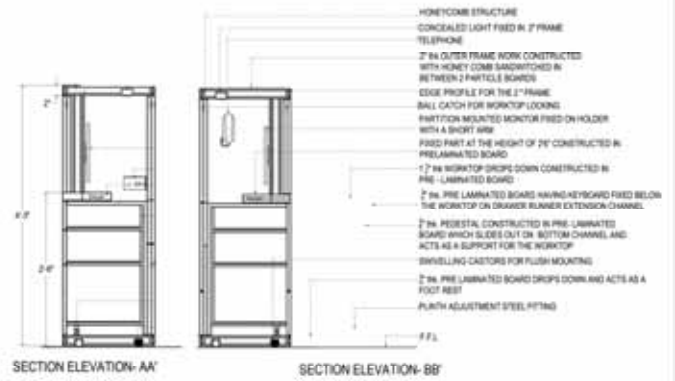
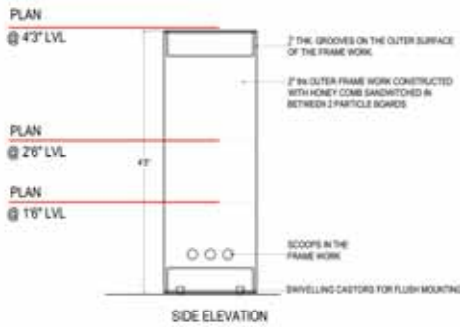
Start listed as one of the best potential candidates for mass production, the winning design is currently being developed at full scale at our workshop. While the final outcome will be influenced by many refinements, we are quite sure that the essence of the concept has already been captured.



PLAN.

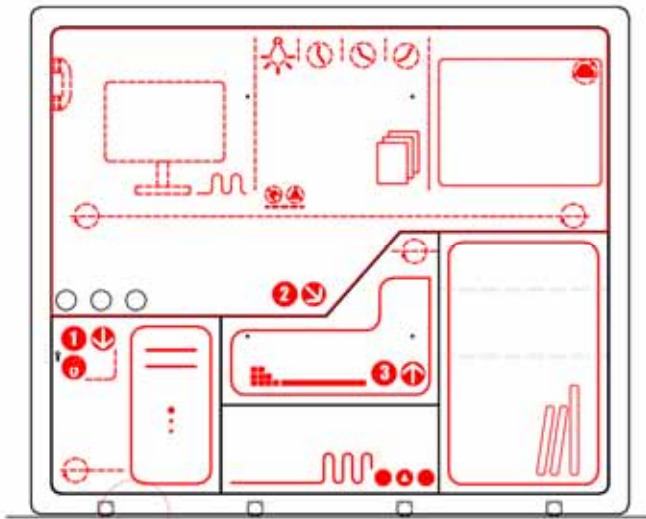
WORKSTATION PLAN - WORKING MODE.

SECTIONAL ELEVATION.

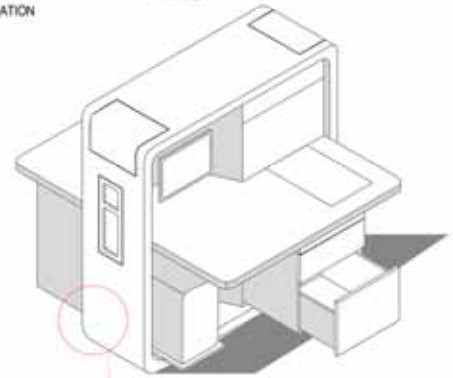


WORKSTATION SEC. - WORKING MODE.

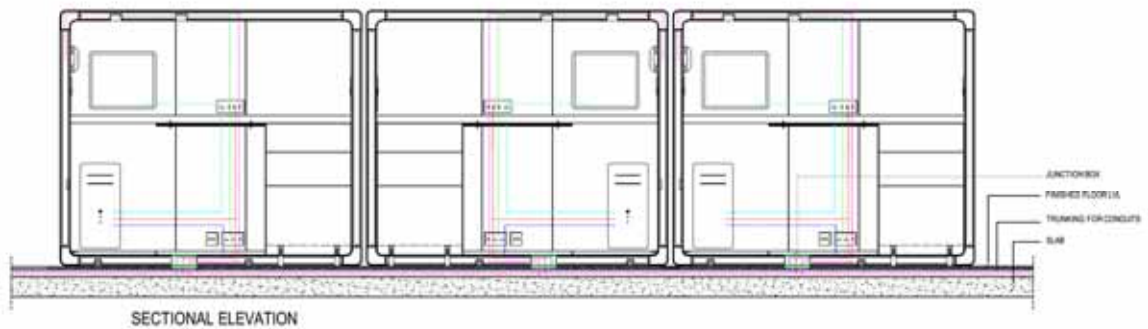
INDUSTRIAL PRODUCTIONS
The product is an assembly of very simple individual components, none of which pose any special challenge in terms of manufacture. Its new combination technology lies in its invention. The shapes, sizes and materials chosen were well within the parameters of ease of production and optimal manufacturing cost.



FRONT ELEVATION



Point Elevator_workstation in Open
 Point Elevator_workstation in Closed
 Axonometric View_workstation in Open



SECTIONAL ELEVATION

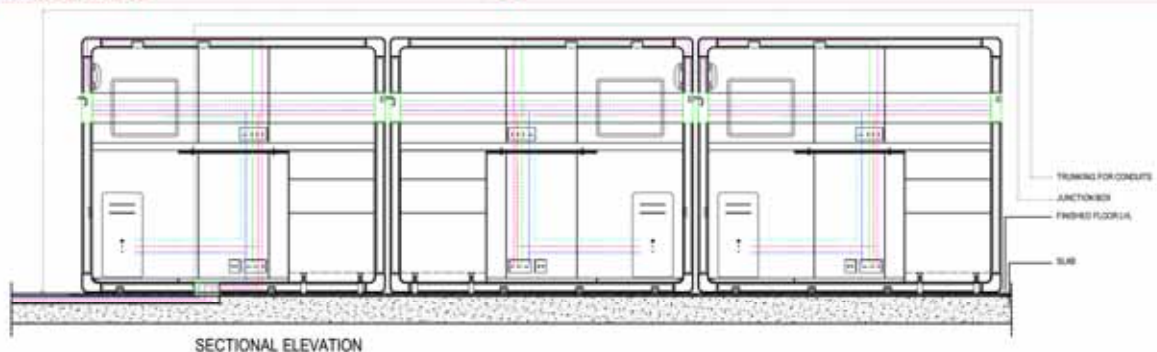


SECTIONAL PLAN @1/8"

ELECTRICAL RACEWAY OPTION 1

POWER, VOICE AND DATA.
 Each module will come with pre-installed electrical, LAN and telephone cabling that can be locked to the raceway through a service box provided near the footrest. Additional single modules will provide the option of providing an entirely new system or link many modules together in series. It is possible to have modules in series and in one version, even the CPU pre-installed. Power, voice and data the essence of the concept is 'plug and play'. Each module will come with pre-installed electrical, LAN and telephone cabling that can be locked to the raceway through a service box provided near the footrest. Additional single modules will provide the option of installing an entirely new system or link many modules together in series. It is possible to have footrests in process and in one version, even the CPU pre-installed.

ELECTRICAL RACEWAY OPTION 2



SECTIONAL ELEVATION



SECTIONAL PLAN

