

HOSPITALITY multi-cuisine, lounge and fine dine

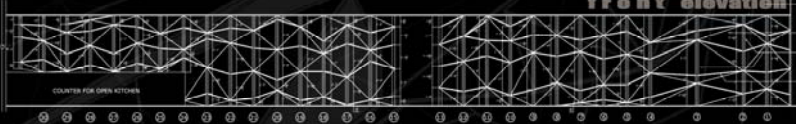
:lower level

multi-cuisine

The program brief defined the requirement of four different dining experiences and offerings in a single hospitality destination. These were to be accommodated on two levels, a floor and a terrace, each having a 4000 sq. ft. footprint. On the lower level, a multi-cuisine vegetarian eatery with open kitchens, on the upper, a lounge bar, fine dining and an open air grill. The challenge for us as designers was to first manage the requirements within the given space, second offer dismountable construction solution to cover the terrace in conformity with local byelaws, and third, create experientially rich and varied interior experience to address different patron need-states for different spaces within the singular entity.

Grappling, as we were with the frustration of a design that did not quite come together, someone tore and crushed the paper with the initial sketches. Much later, we wanted to go over the ideas again and dug it out of the bin. The design revealed itself, not in the content of the sketches but in the form of the paper! We evoked that crushed paper feel in a different material.

Crossover is a multi-cuisine restaurant with many open kitchens that dish out a variety of offerings in a contemporary setting. The age demographic of the patrons necessitated a young, trendy, fashion forward solution. In keeping with impeccable hygiene requirements, the materials choice inclined towards hard, easy to maintain surfaces, steel being a natural choice.



the carapace

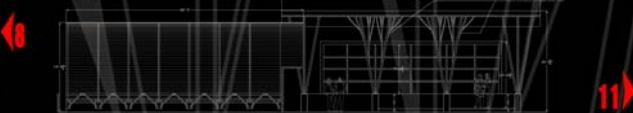


We call this polymorphic construct, the 'Carapace'. It is an undulating wall that runs the entire diagonal length of the restaurant connecting visually the open kitchen and the front glass facade and providing a backdrop for the table setting. The wall turns and warps to become the canopy for the open kitchen in the plan. Constructed out of plywood clad in high quality brushed stainless steel skin laminate, it reflects and disperses light qualitatively.

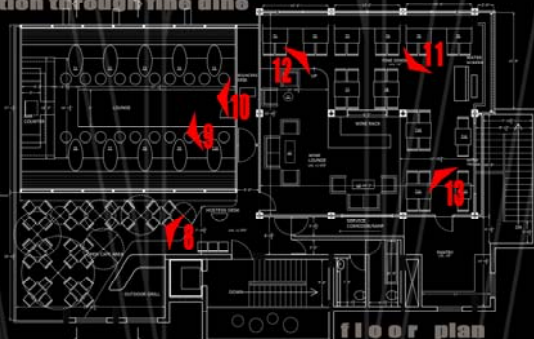
Designing and detailing it was a challenge. So, was the construction. Using standard construction techniques and by introducing some modularity, we were able to achieve this within the standard project schedule time. And budget.



The structural system was deliberately left exposed to add drama to the space and also intensify the sense of a temporary construct. Inside, the DJ console was located above the bar. From the entrance, the elevated DJ with flashing lasers for company became a quick introduction to the energy of the place. The elliptical tabletops and stainless steel supports evoke the neo-retro feel of sci-fi pop culture icons like Flash Gordon comics and star ship enterprises! The space has been designed to disconnect patrons from outside. Effect lights create psychedelic patterns on the ceiling walls, and lasers stream across the of the dance floor filled with artificial smoke. For the 20-30 year olds who fill up this rocking space every evening, it is one place!



section through lounge



floor plan

section through tube



Fine Dining: Catering to an entirely different clientele of upper affluent customers, this space had to evoke subtle luxury and grandeur to be successful. In order to mitigate the effect of a small footprint, we decided to maximize the height available inside. An undulating roof imitating the sinusoidal form of a wave rose up to 19' at the apex. Again, with wit we managed to transform a structural necessity into a design opportunity. The columns to support the roof were created to spread in the form of the branches of a tree. Between the bases of these two trees in the centre of the hall, we inserted a bar with a rack to display wines. This became the organizing device for the floor plan. The undulating roof was punctured with lit cutouts that evoked the spread of leaf canopy over trees. The wall separating the fine dining from the service areas became a sandwich double glass window holding an interesting arrangement of stem glasses stacked to 10' height. On another side, a full wall water screen over the window added the gentle sound of cascading water to the environment. The entire colour scheme was in muted earth tones, complemented by silk drapes and high-touch upholstery. The space has

