

Elegance

24 PAGES FREE SUPPLEMENT OF VARMORA ELEGANCE
ALONG WITH AUGUST 2010 ISSUE

Wall trends



Professional take:

Sonali Bhagwati, Nitin Killawala,
ZZ Architects, Vivek Rathore,
Planet 3 Studios

Builders take:

Shapoorji Pallonji, Lodha Developers Ltd., Supreme Universal

Brand talk:

Interfront technology:
World's first dual textured tile

Celebrity take:

Deepika Padukone, Yana Gupta

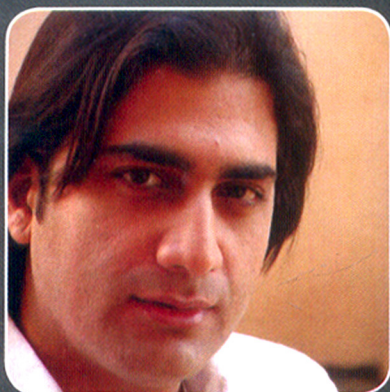
Spotlight:

Digital Printing Technology:
Customized printing on tiles

In the limelight:

Mumbai and Bengaluru events: Launch of digitally printed tiles

IN ASSOCIATION WITH
SOCIETY
INTERIORS



Ar. Kalhan and Santha Mattoo, Planet 3 Studios, Mumbai

Wall tiles are highly resilient options and can take wear and tear well. In hot and tropical weather, wall tiles keep the area cooler. They are generally less expensive than most materials. In case of distressed or faulty construction, tiles can conceal surface imperfections and leakages easily. The modular nature allows for damaged parts to be replaced without changing the entire surface.

They work well for indoors as well as outdoor conditions and are naturally fireproof and waterproof. No VOCs or allergic compounds are emitted by tiles. The specification of any particular wall tile depends on the requirement. And this varies greatly with design intent and specific client/end user needs.



Ar. Kapil Aggarwal & Ar. Nikhil Kant, Spaces Architects, New Delhi

Instead of using stone, wall tile is a very good option. The easy installation and starting thickness as compared to stone makes it a more viable option. The cost is way cheaper and the variety available is huge. In stone the options available are limited. Wall tiles of grade 4 and 5 are harder than the Italian stones because these stones are porous. Moreover, these days options are available of choosing tiles looking similar to stones.



We also go for wall tiles in cement kind of look. However, depending on its application we generally decide what tiles are to be used because clients are willing to experiment due to the options available.

Ar. Ravi Shankar, RSA, Mumbai

Wall tiles come in uniformity of shades and designs and are easy-to-fix. The uniform sizes ensure minimum wastage and there are new designs constantly hitting the market. This gives a variety of options. My preference is wall tiles that are stronger with minimal porosity and hence can be used in a variety of projects ranging from car showrooms, factories, hospitals, bathrooms, and residential apartments.

