

Explore, Experiment & Establish

Volume 18(06)

FEB 2005

Rs 100/-

Indian Architect & Builder

FREE SUPPLEMENT : Profile on HYATT REGENCY, KOLKATA.

OVERSEAS ENTERPRISE : Vienna

 **Jasubhai**
M E D I A

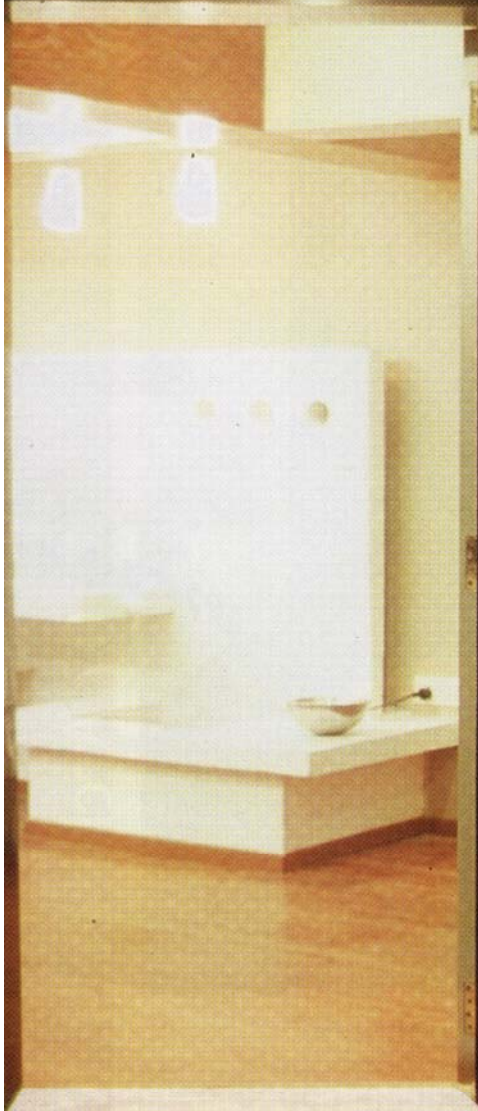


In its sixth year now, the Young Designer's Award provides a platform for the next generation of designers to explore and establish newer design solutions. Creating a context that aims at producing explorative results, the young designers forum is an ever-expanding collective of like-minded, creative - all focused on the promotion and increased exposure for young thought leaders of today.

Focus: Young Designers, 2005.



Young Designers



SUBTLE STYLE

The Deshpande Residence is a conscious effort by Planet 3 Studio at an understated elegance in interior design

Text : Kaumudi, Mhatre
Drawings and photographs: courtesy the architect



The Deshpande Residence is a conscious effort by Planet 3 Studio at an understated elegance in interior design. The project is a two-story house located in a prime location in Mumbai. The architecture is a blend of modern and traditional elements, creating a unique and sophisticated living space. The interior design is characterized by clean lines, neutral colors, and high-quality materials. The use of wood and stone adds a touch of warmth and texture to the space. The overall aesthetic is one of understated elegance and timeless beauty.



1. The simple entrance complements the classy look within.
2. Vibrant painting and unusual ceiling balances the muted ambience of the living area.



PLAN

Mumbai based Planet 3 Studios Architecture Pvt. Ltd have successfully designed more than forty Architectural and Interior design projects varying from residences, institutions, corporate houses, hospitality industry and retail banks in a span of 6 years. This young team of architects, headed by Kalhan and Santha Gaur Mattoo believes in making the client an active member of the design process, which is subsequently reflected in their final design solution. Featured here, is the Deshpande residence at Dadar. The interior design of this project showcases the minimalist approach of Planet 3 studios in creating a small occasional use apartment.

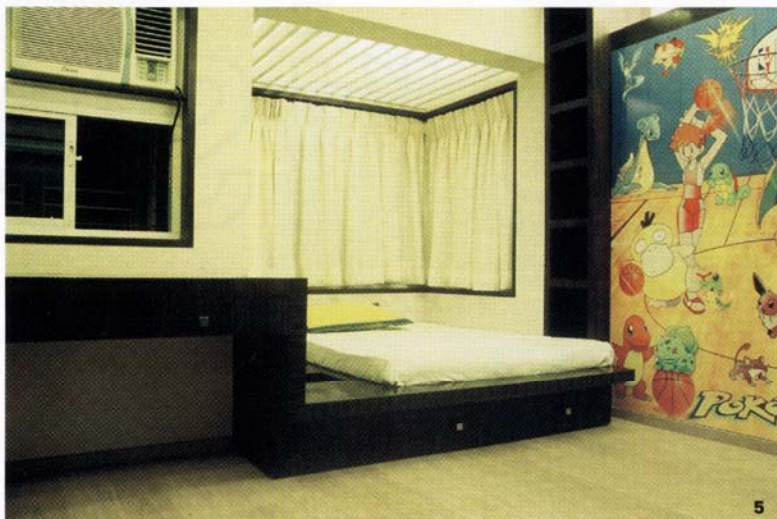
The design solution for this project had to incorporate the lifestyle choices of this nuclear family and work within certain budget constraints. Since the client did not require a formal dining or a T.V in the living area, as found normally in any Mumbai apartment, the designers had an option of rethinking the stereotyped design. The designers could play around with the kitchen and the living areas, integrating them to form informal spaces of interaction.

Given the brief the design team proposed the demolition of all the existing walls that subdivided the space into various pockets. A cleaner canvas made it easier for the designers to work on.

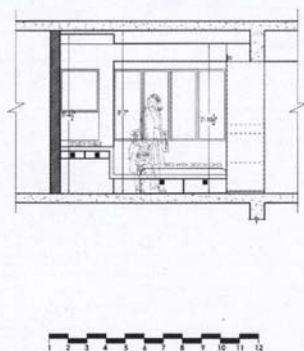
The entry to this house sets the tone for the subtle yet classy look inside, with the use of simple dark ebony panel framing the entrance door.

For the design team, the most intriguing and challenging aspect of the design program was the absence of T.V as the central organizing device in the living area. The team had to look back in time in

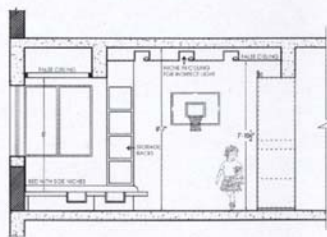




3 & 4. The water cascade which forms the visual focus.
5. Children's bedroom with the pokémon wall and built-in furniture.



SECTION THROUGH KIDS BEDROOM



FACT FILE

Project : INTERIORS OF DESHPANDE RESIDENCE
Location : DADAR
Client : Mr. Deshpande
Architect : Kalhan Mattoo and Santha Gour Mattoo
Design Team : Planet 3 Studios Architecture Pvt. Ltd.

order to recollect what were the focal points, before the intrusion of the television in a living area. The fireplaces found in houses in the cold climates areas seemed to be the obvious answer.

Keeping that in mind, the design team proposed the tropical equivalent: a custom-made water cascade. The sight and sound of water flowing over multiple levels is the highlight of the entire room and creates a unique experience in this space.

The ceiling with an awkward beam grid created designing constraints. The solution lay in highlighting it as a design element rather than concealing it. The use of half vault ceiling with reflected lights forms an added feature of the room.

The presence of the oil on canvas mounted on one wall added a splash of colour and vibrancy thus breaking the monotony of the otherwise stark room. Minimum furniture in this room emphasizes the presence of the water cascade.

The design brief also included the client's wish to cook and entertain in an informal setting. So the kitchen area was opened up completely making the space functionally flexible. At the same time a frameless sliding glass barrier and cantilevered breakfast table defines the transition between this space and the living area.

The bedrooms were designed to give a cosy and comfortable look. The requirements in the master bedroom were very simple: ample storage, study and dresser. The other bedroom however has child imprints stamped all over it; an entire wall dedicated to 'Pokémon'. The bed with enough space to dump toys books and other assorted things has been tucked away in one corner of the room in order to create more space for kid's activities. The built-in furniture in both the bedrooms creates a very clean and uncluttered look.

In this project the designers have adopted a variety of textures and patterns through subtle change of materials. Dark ebony veneer furniture against white oak laminated flooring, red sandstone wall cladding against white walls, charcoal vitrified tiles against laminated wooden flooring; contrasting patterns have been formed by bringing out the contrast in inherent qualities of different materials rather than with use of artificial colours.

Overall the interior design of this house reflects a contemporary urban setting. The emphasis here is on subtle style and straight lines. The designers have consciously aimed for muted ambience, which is in complete accordance with the client wishes.

The interior design of the Deshpande residence is a complete showcase of the Planet 3 Studio's vision of being client oriented, moulding the design according to the client's requirements and character.